

# Shinkoiwa Southeast Bicycle Parking Area

Location : Katsushika-ku, Tokyo

Completion : July 2022

Client : Katsushika-ku

## Two ECO Cycle units installed in a new park at the South Exit of Shinkoiwa Station



As part of a private development project, two ECO Cycle units were installed within the Komatsuna children's playground in the Shinkoiwa 2-chome district of Tokyo's Katsushika-ku. Installation of these underground mechanical bicycle parking facilities helped to address the problem of insufficient bicycle parking space near the train station, where space is difficult to find. Space-saving construction was achieved despite a range of harsh constraints, including work alongside other construction, being adjacent to the railway, and the narrowness of the site. This facility is the first of its kind in Katsushika.

### Location Map

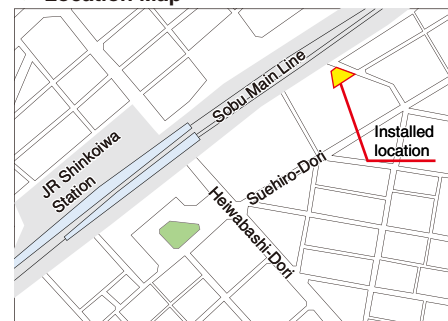
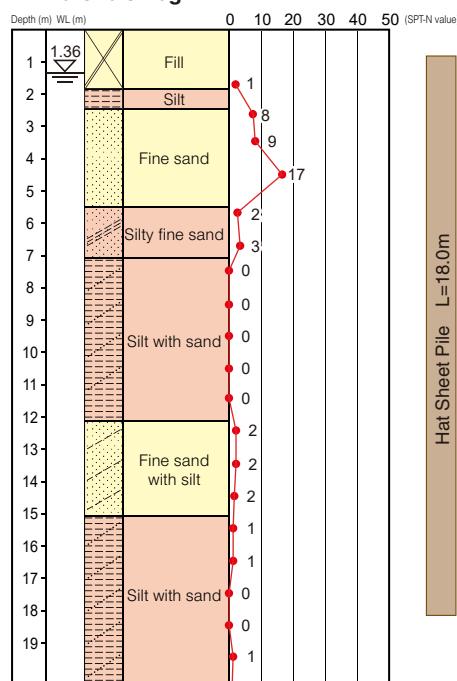


Image created by GIKEN based on fundamental geospatial data from Geospatial Information Authority of Japan (<https://lfd.gsi.go.jp/download/menu.php>)

### ECO Cycle Specifications

- Units : 2
- Total Capacity : 408 bicycles (204 × 2 units)
- Usage : Monthly use
- Card Type : IC card

### Borehole Log



\* Extrapolated SPT-N value when over 50.



### Layout

