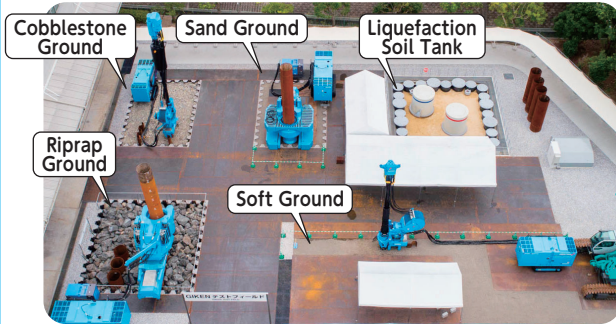


6 Test Field

5 kinds of ground are reproduced and experiments are conducted by using real machines.



7 TSUNAMI simulator

Simulate TSUNAMI in the water tank, and compare the performance of 2 types of Levees. It represents the stiffness of GIKEN developed levee.



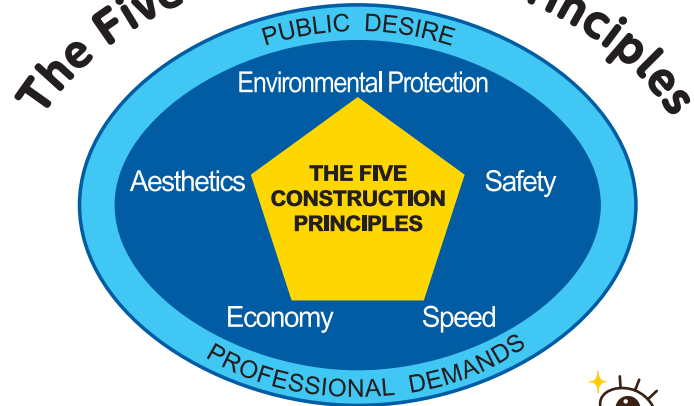
8 Sky Garden



Outside rest area located on the second floor of the building.



The Five Construction Principles



Machines and Methods that compliance to "the Five Construction Principles" are developed at GIKEN.

This symbol implies "Public Eye." It is a scientific standard that all of us can convince, which stipulates the appearance of construction work.



* I.C. refers to an expressway entrance and exit.

GIKEN LTD., Kochi Head Office

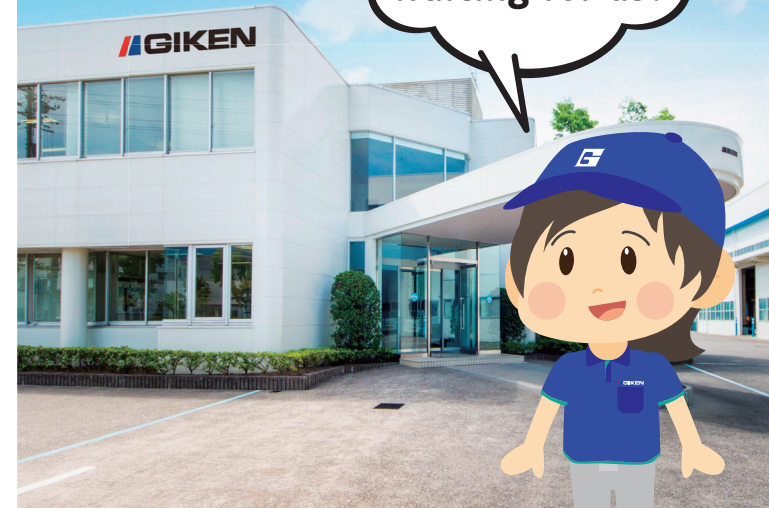
3948-1 Nunoshida, Kochi City,
Kochi Prefecture 781-5195
Tel.088-846-2933 Fax.088-846-2939
<https://www.giken.com>

"SILENT PILER" is a registered trademark or trademark of GIKEN LTD. in the United States and other countries.
© 2018 GIKEN LTD. All Rights Reserved.

Ver 1.1EN01 / 7 Sep 2018

Welcome to GIKEN

Wondering what kinds of technologies are waiting for us?



Implant Method Changes Worldwide Construction

GIKEN

GIKEN LTD.

Whole View of GIKEN Kochi Head Office

Lots of researches and experiments are conducted at GIKEN Kochi Head Office.

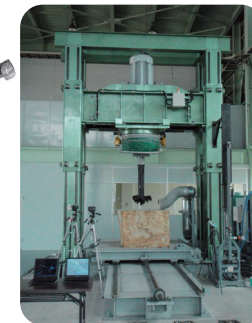
New technology is born from here!



④ Auger-Testing Equipment



Checking the performance of "auger head" that to scrape cobblestones and rocks used when press into hard ground.



⑤ The Museum of Pile Drivers

The museum displaying the real machines that can tell the history of world pile drivers and the evolution of "Silent Piler".



① ECO Park

(Earthquake-Resistant Underground Parking)

It is a parking lot that automated storing vehicles in a basement with walls of pressed-in piles. There is bicycle version called "ECO Cycle".



※Installed in 1994. Renewal in 2018.

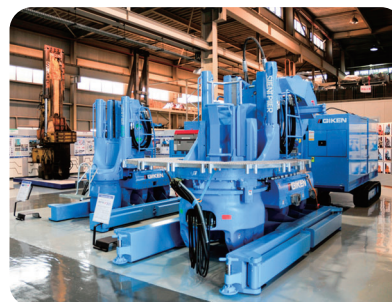
Mobile ECO Cycle



Prospering culture on the ground; Storing function under the ground

Bicycle storing system that can be simply installed and relocated with applying the technology of "ECO Cycle".

② Kochi Head Office Factory



Development of new machines and check on machines before shipment are done here.



③ Technical Center (GRB System)

Self-moving system that all machines using for press-in run on "already pressed-in piles".

Since no temporary scaffold is necessary, construction can be conducted in every place such as narrow, high or on the water.

