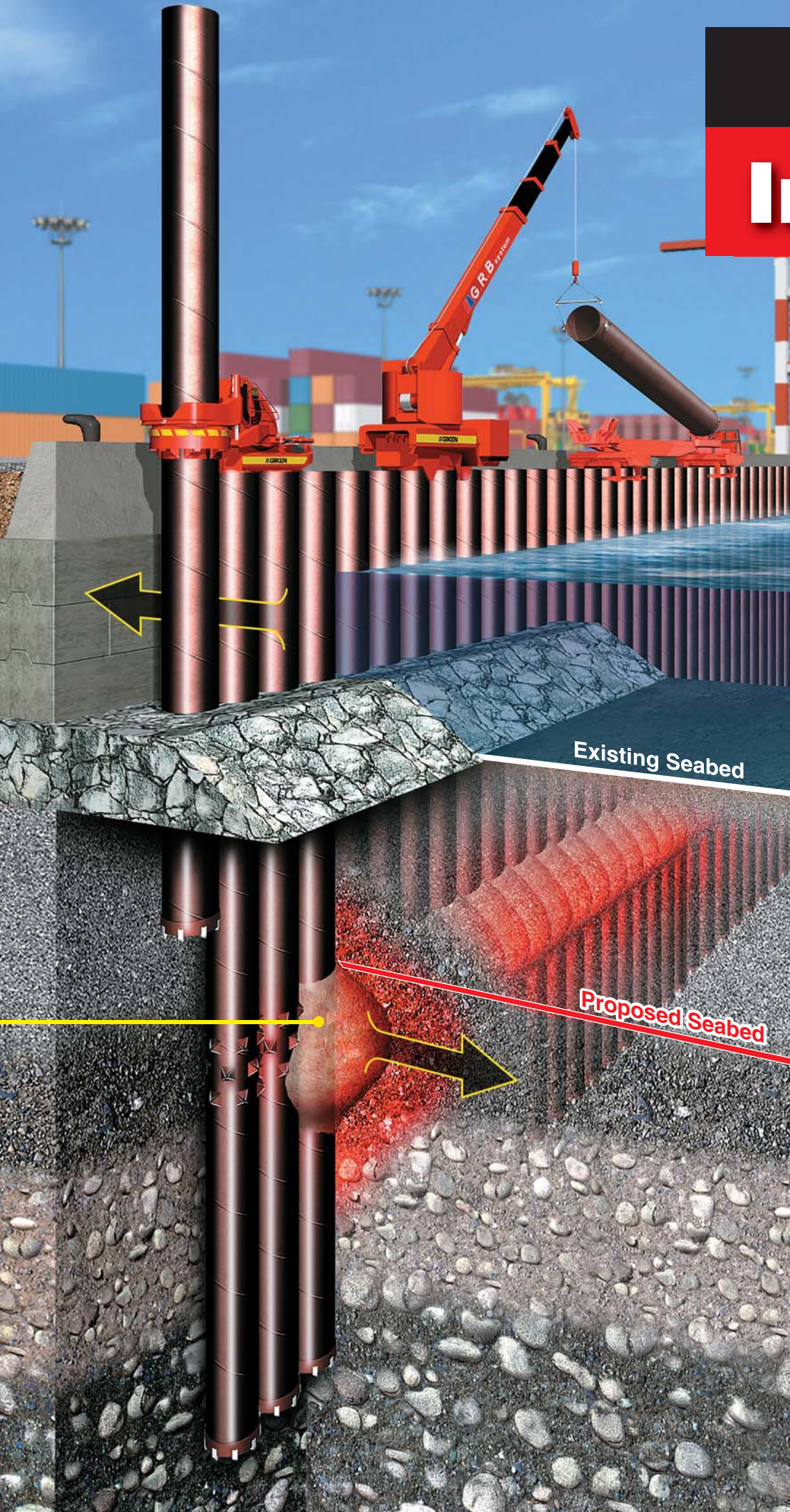
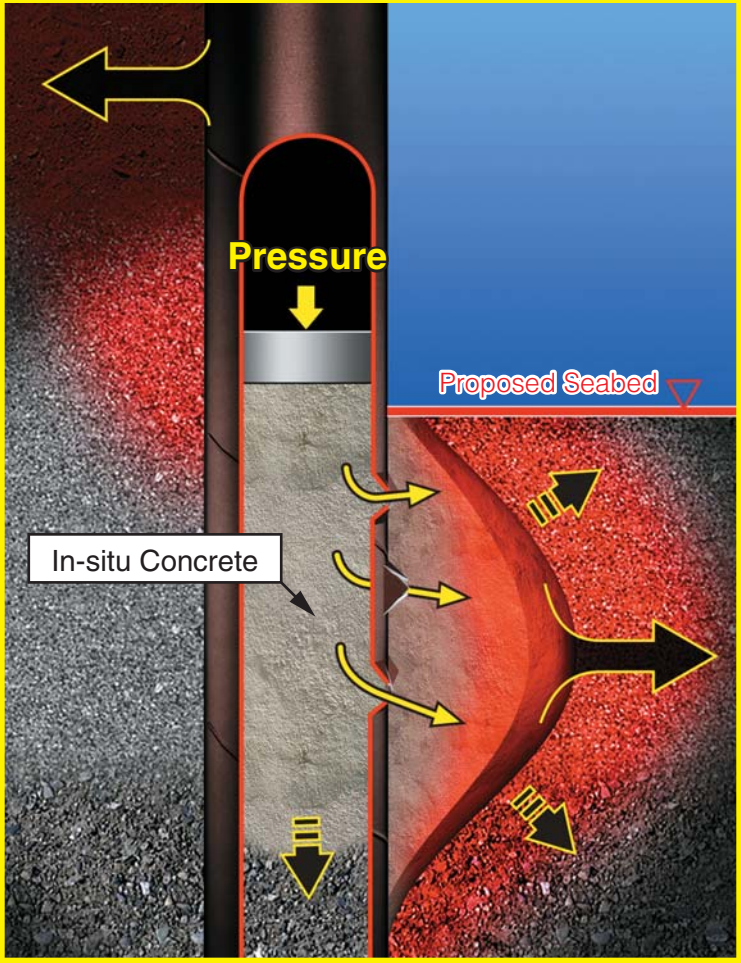


No anchoring or tie-rod is required
so existing operations can be maintained

Implant Lock Berth

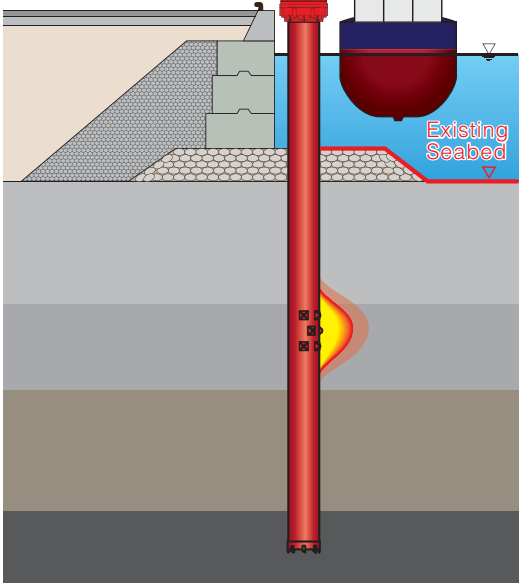
Prevention of lateral spreading in case of earthquakes

The existing quay wall is reinforced by pre-loading pressure concrete.



Quay wall deepening and strengthening to accommodate larger vessels and allow for heavier, more efficient and wider outreach cranes.

No disruption to existing operations during the construction phase.



Larger vessels can be accommodated after deepening the berth.

