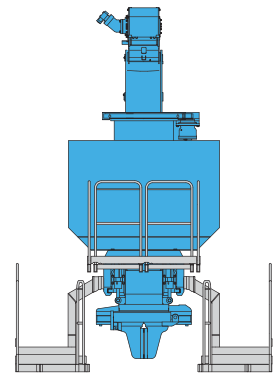
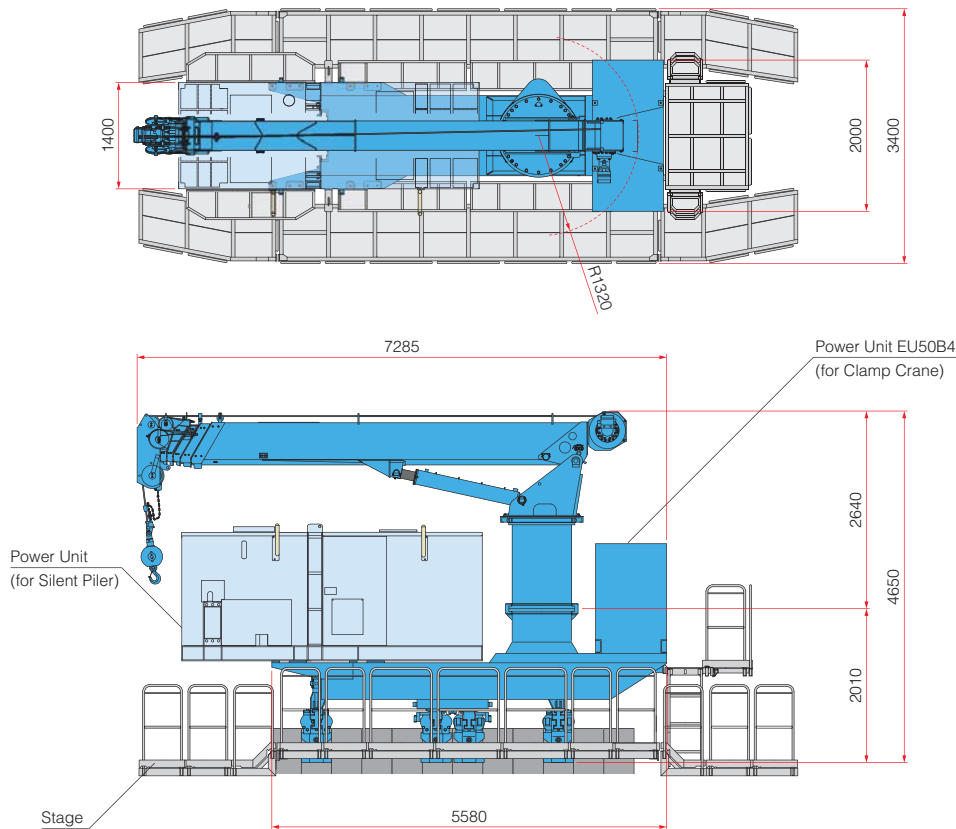


CLAMP CRANE CB2-9

Clamp Crane for 400mm ~ 900mm Sheet Piles

- Can carry the Power Unit of Silent Piler.
- Applicable to 400mm to 900mm width sheet piles with higher lifting capacity than CB1B.
- The best solution for sheet piling works under physical constrains such as on water, at narrow location and close to railway track.

GRB system



Clamp Crane CB2-9		
Specifications	Lifting Capacity	2.95 ton × 8.0 m (Single line)
	Max. Working Radius	24.0 m
	Max. Lifting Height	Approx. 27.0 m
	Slewing System	Auto-slew Lock System
Safety Devices	Auto Over-winding Protection Device (with Alarm call system) Overload Alarm Device Boom Height Limit System Slewing Limit System	
How To Operate	Radio Control / Cable Control	
Mass	16300 kg *Exclude Power Unit for Silent Piler.	
Applicable Sheet Piles	U Sheet Pile 400 to 600 mm Hat Sheet Pile 900 (10H to 50H) Z Sheet Pile 575 to 708 mm U Sheet Pile 600 to 750 mm (PU, AU)	
Power Unit	EU50B4 (Equivalent to USA Tier 4 and EU Stage IIIB)	

● Maximum Lifting Pile Length

Applicable Piles			Pile Length (m)	
Sheet Pile	Width	Type	CB2-9	CB1B
U Sheet Pile	400 mm	II	22.0	13.5
		III		
		IV		
	500 mm	V _L	18.0	12.3
		VI _L		
600 mm	II _w	22.0	12.3	
	III _w			
	IV _w			
Hat Sheet Pile	900 mm	10H	19.0	10.4
		25H	18.0	7.9
		45H	16.0	
		50H	14.0	

Longer Applicable Length (with arrow pointing to 16.0 and 14.0)

The above specifications are subject to alternation without prior notice.

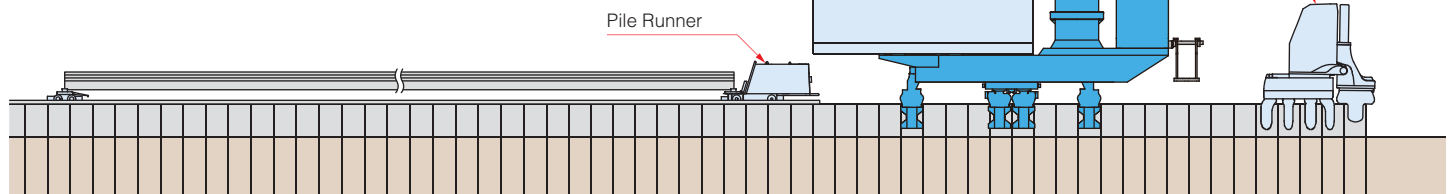
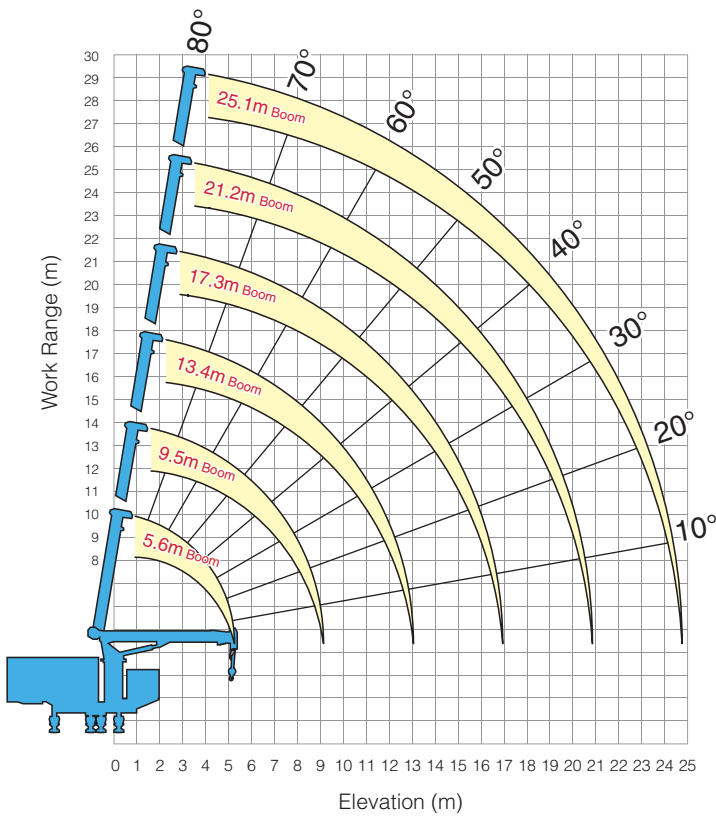
● Lifting Capacities

Unit: tons

● GRB System

Boom Radius (m)	5.6	9.5	13.4	17.3	21.2	25.1
1.5	2.95					
2.5	2.95	2.95				
3.0	2.95	2.95	2.95			
3.5	2.95	2.95	2.95			
4.0	2.95	2.95	2.95	2.95		
5.0		2.95	2.95	2.95	2.95	
6.0		2.95	2.95	2.95	2.95	1.80
8.0		2.95	2.95	2.95	2.60	1.80
10.0			2.40	2.20	2.10	1.80
12.0			1.70	1.70	1.70	1.50
14.0				1.40	1.40	1.20
16.0				1.00	1.00	1.00
18.0					0.80	0.80
20.0					0.65	0.65
22.0						0.50
24.0						0.35

● Lifting Heights



The above specifications are subject to alternation without prior notice.

*Piler Stage is required for actual work.

GIKEN Construction Solutions Company

www.giken.com

GIKEN LTD.

International Business Department
 3948-1 Nunoshida, Kochi-shi, Kochi 781-5195, Japan
 Tel. : +81-(0)88-846-2980 Fax : +81-(0)88-826-5288
 Email : international@giken.com

Global Network : Japan, USA, UK, Germany, Singapore, China

For more contact information, please visit:
<http://www.giken.com/en/contactus/groupcompanies>