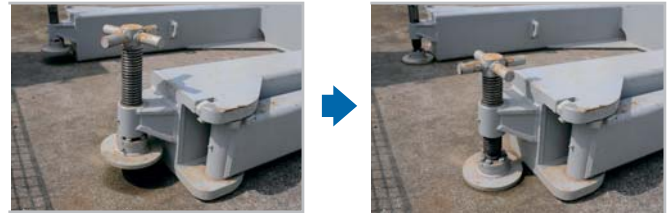


# Reaction Stand Jack

## Saving Time for Setting Reaction Stand



It makes leveling reaction stand possible without removing Silent Piler from the stand. It can save time a lot and setting activity becomes safer. In addition, steel plates to adjust the level are no longer needed.



Attached on  
Reaction Stand



### ● Specifications

|                          |                          |
|--------------------------|--------------------------|
| Max. load                | : 38.0 tons              |
| Max. jack up height      | : 100 mm                 |
| Length of Reaction Stand | : Normal Length + 420 mm |
| Mass                     | : 21 kg/piece            |