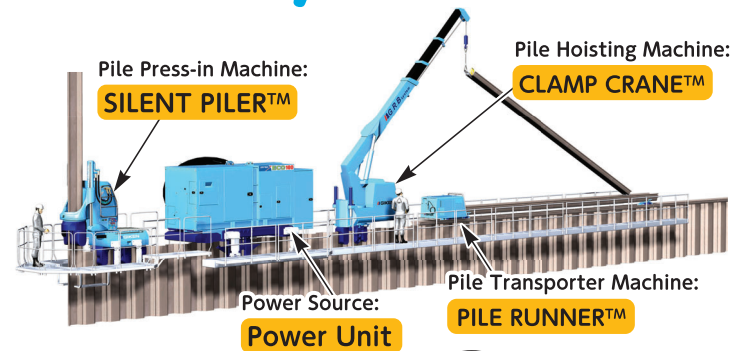
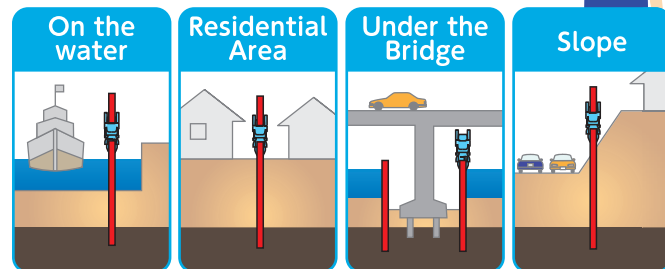


GRB System™



Since compact machine runs on the piles and does work, press-in job can be done on the water, slopes, under bridge and even at residential area.

Press-in carried out at every place.



Disaster Prevention

Pressed-in pile united with Earth resists earthquake or TSUNAMI and firmly remains.



Underground Development



Pressed-in piles create space under the ground and being utilized as parking lot / bicycle parking.



GIKEN LTD., Kochi Head Office

3948-1 Nunoshida, Kochi City,
Kochi Prefecture 781-5195

Tel.088-846-2933 Fax.088-846-2939

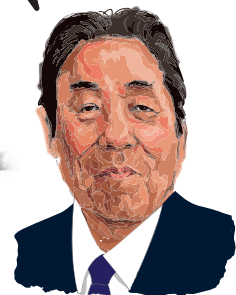
<https://www.giken.com>

"SILENT PILER" is a registered trademark or trademark of GIKEN LTD. in the United States and other countries.
© 2018 GIKEN LTD. All Rights Reserved.

Ver 1.1EN03 / 14 Sep 2023

Disaster Prevention Technique from "KOCHI" Press-in

I invented it



SILENT PILER™ Inventor
AKIO KITAMURA

Implant Method Changes Worldwide Construction

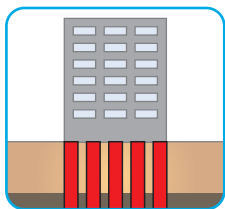
GIKEN

GIKEN LTD.

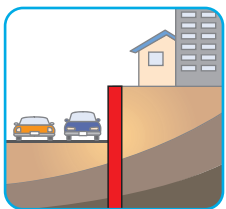
"Pile"

is very active in our familiar places.

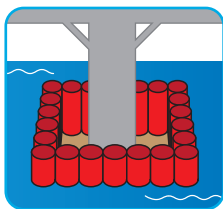
Use of Piles



Supporting Structure



Earth Retaining



Preventing Water Invasion

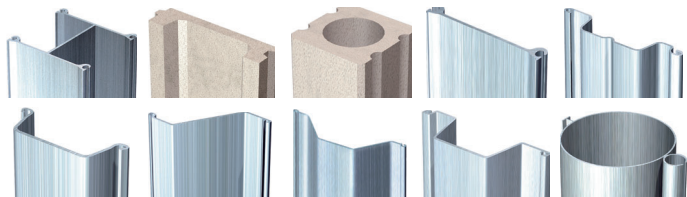


We can live safely thanks to piles!



Types of Pile

There are various shapes of piles according to purpose.



Giken invented the technology called

"Press-in"

that pressing piles into ground silently.



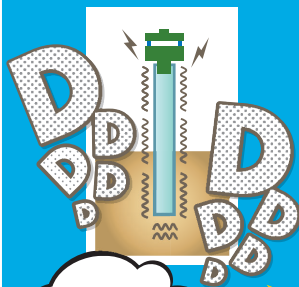
Mechanism of Press-in



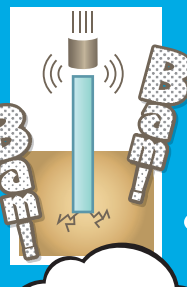
To drive a pile into ground requires huge energy. Previously.....

Vibration
(Shaking)

Striking
(Hitting)



Vibration



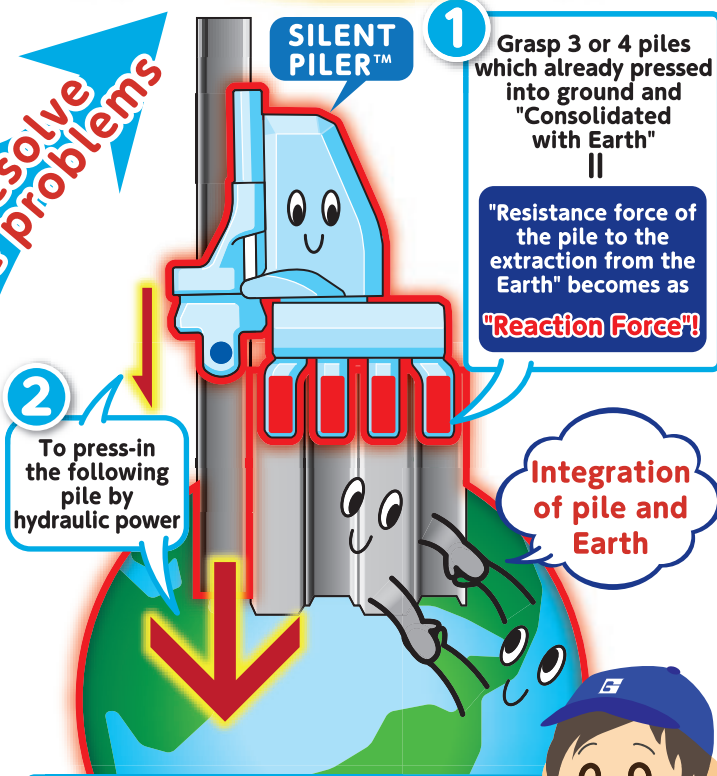
Noise

Construction Pollution



Grasp the previously pressed-in pile and use that force to drive the next pile

Press-in by "SILENT PILER™"



Realized the pile-driving work without noise or vibration!

