

Shibuya Fukuras West Bicycle Parking Area

Location : Shibuya-ku, Tokyo

Completion : November 2019

Client : Shibuya-ku

ECO Cycle unit installed as part of a redevelopment project in Shibuya



An ECO Cycle unit was installed as part of the Dogenzaka 1-chome Station area type 1 urban redevelopment project. Located adjacent to the Shibuya Fukuras commercial building, it is being used as a public bicycle parking facility. ECO Cycle was chosen for its ease of construction, taking the surrounding environment (a narrow site and high foot traffic) into consideration.

Location Map

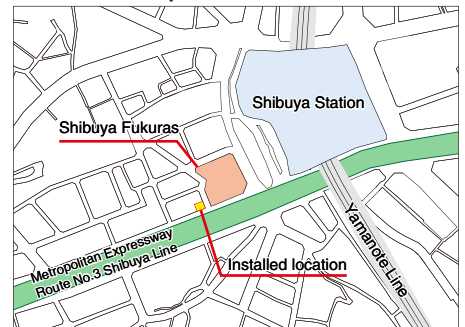
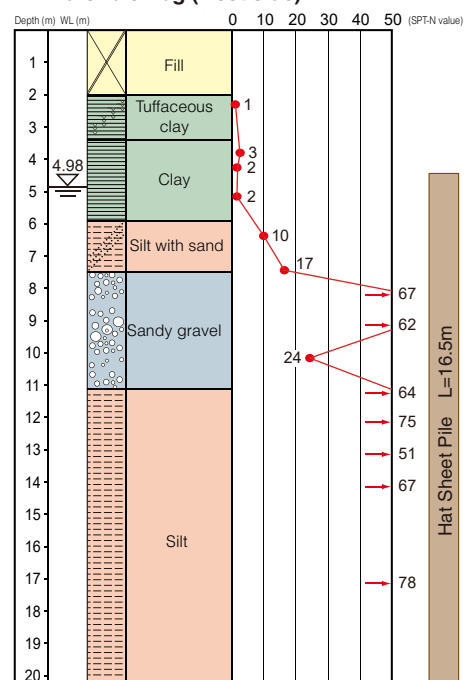


Image created by GIKEN based on fundamental geospatial data from Geospatial Information Authority of Japan (<https://lfd.gsi.go.jp/download/menu.php>)

ECO Cycle Specifications

- Units : 1
- Total Capacity : 204 bicycles (204 × 1 units)
- Usage : Monthly or Hourly use
- Card Type : IC card

Borehole Log (west side)



* Extrapolated SPT-N value when over 50.

Entry/exit booth designed to harmonize with the surrounding buildings



Layout

