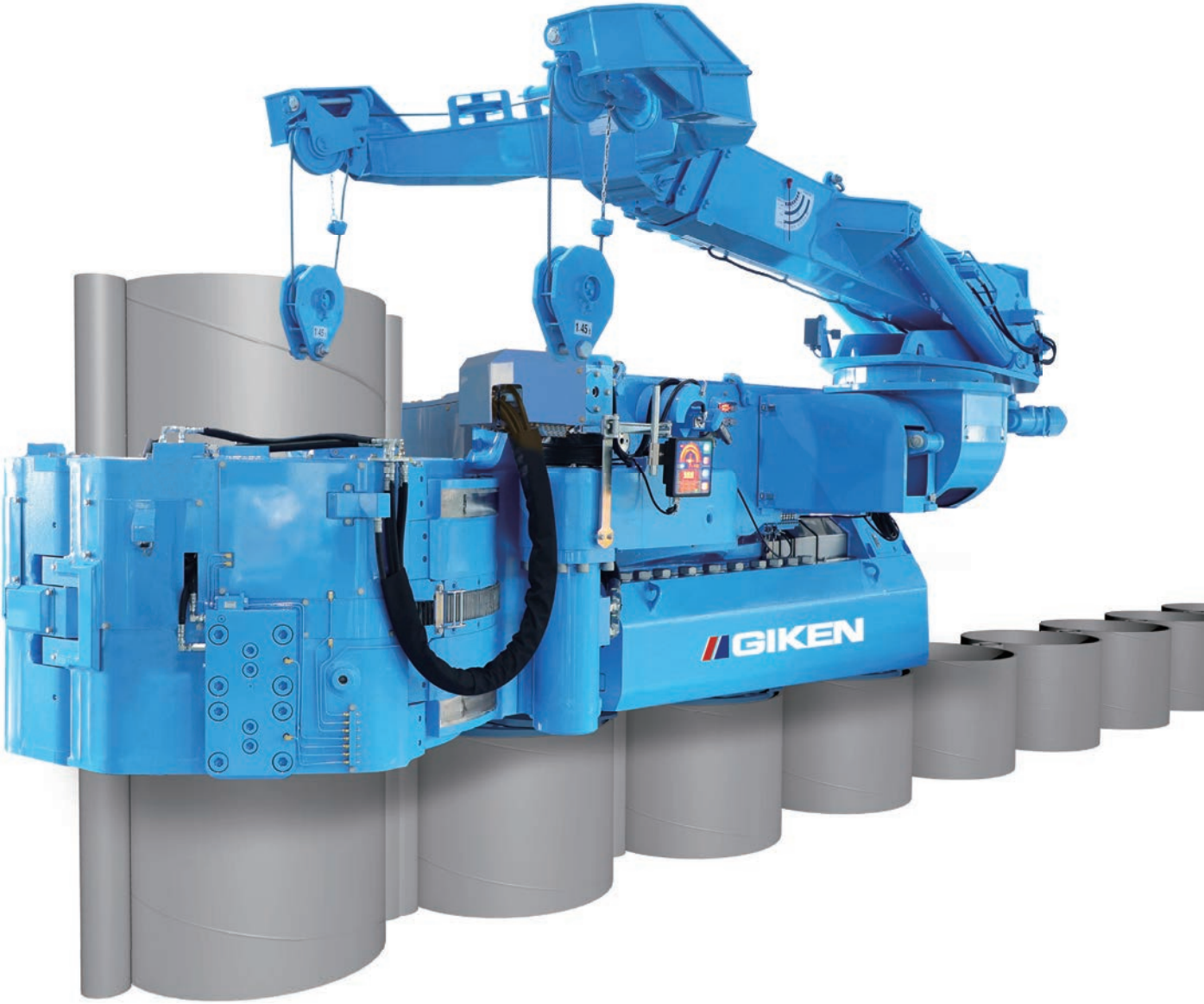


SILENT PILER™

Low-headroom Press-in Machine

CLP200A

Overhead Clearance Method
For Tubular Sheet Pile D31.49-39.37 in



The GIKEN logo consists of a stylized red and blue symbol followed by the word "GIKEN" in a bold, black, sans-serif font.

CLP200A

SILENT PILER™ Press-in machine dedicated for sites where overhead clearance is limited

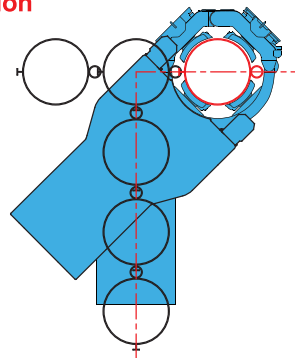
SILENT PILER CLP200A for tubular sheet piles is a low-headroom press-in machine designed for installing tubular sheet piles in areas with limited overhead clearance, such as under bridges and high-voltage power lines, where it has been difficult to work using traditional press-in machines.

The front-opening mechanism of the chuck and Y-boom of the pitching equipment allows the maximum length of piles to be pitched based on each on-site condition. It also makes on-site work more efficient and labour-saving with various automation technologies and its capability to perform corner installation.

■ Allowing Corner Installation to be Performed

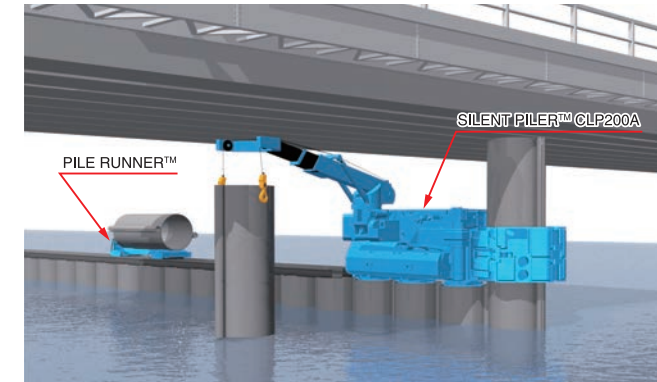
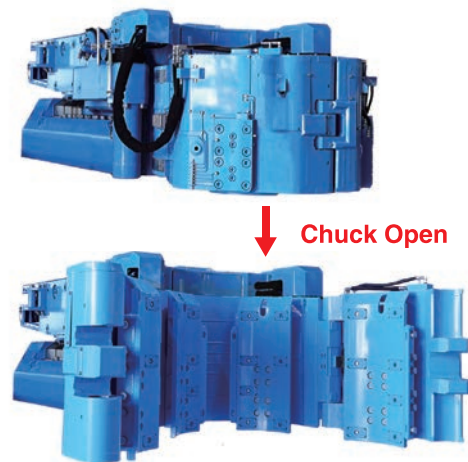
The rotating mechanism of the chuck has been changed so that it can rotate by 45 degrees, allowing this machine to perform corner installation, which has not been possible with conventional machines.

Corner Installation



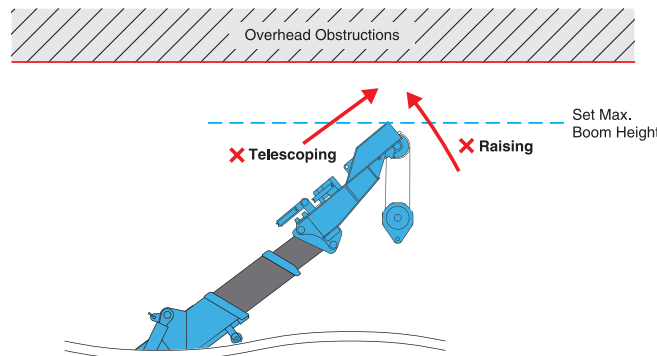
■ Chuck Front-opening Mechanism

The front part of the chuck opens to allow the maximum length of tubular sheet piles to be pitched based on each on-site condition. In addition, each operation: "inserting/removing a lock pin" or "opening/closing the chuck," can be easily performed with a single button, further improving workability.

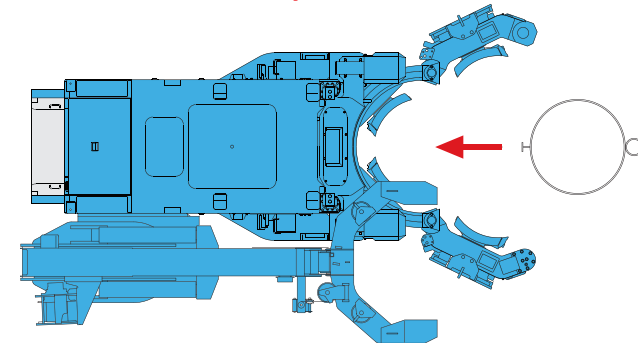


■ Automatic Boom Stop Function with Height Adjustability

When the top of the boom reaches the set height, an alarm buzzer sounds and the lifting device automatically stops to ensure work safety.



Pressed-in Piles Pitching Work



■ Home Position Return Function

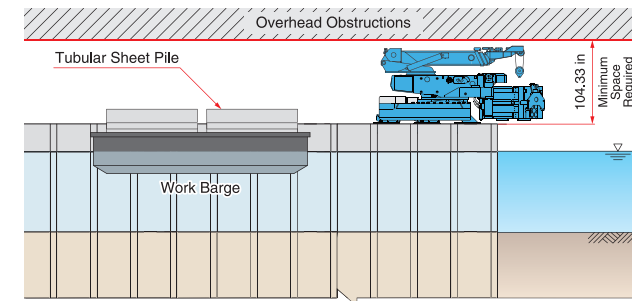
One-touch operation to return the machine to its basic position (home position) when partitioning it into three portions reduces the workload for the operator.

■ Clamp Position Automatic Adjustment Function

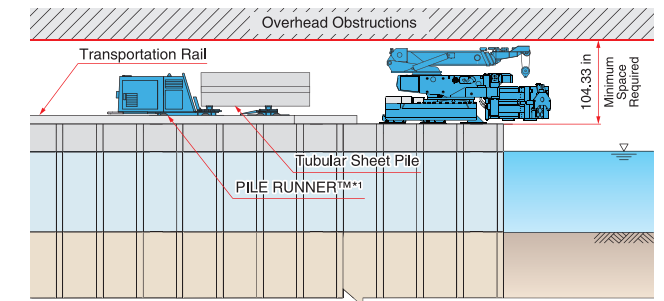
By setting the pile diameter and pitch between piles in advance depending on the on-site conditions, the clamp position can be adjusted forwards/backwards automatically with stroke sensors installed in the front/back/right/left of the clamp.

Standard Machine Layout

When using a work barge



When using PILE RUNNER™*1 *1 PILE RUNNER is not included in this product.

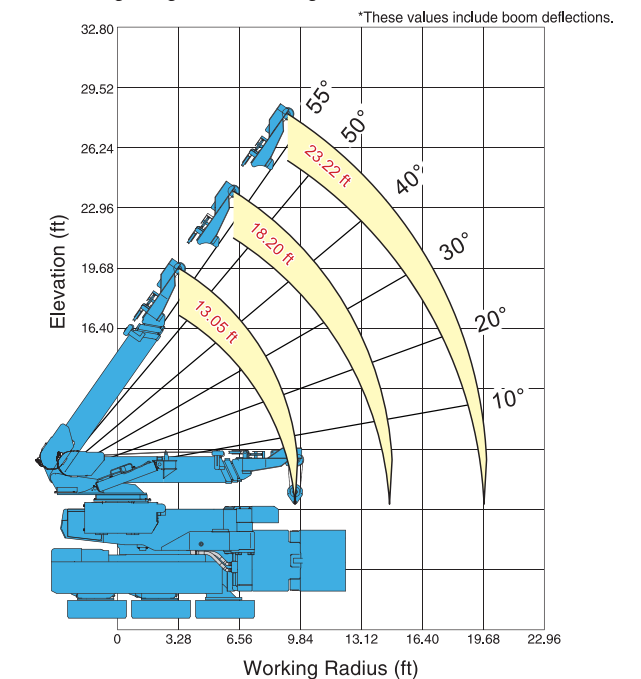


● Lifting Capacities

Boom Radius	13.05 ft	18.20 ft	23.22 ft
3.28 ft	2.9 t	2.9 t	2.9 t
6.56 ft	2.9 t	2.9 t	2.9 t
8.20 ft	2.9 t	2.9 t	2.9 t
9.51 ft	2.9 t	2.9 t	2.9 t
9.84 ft		2.9 t	2.9 t
11.48 ft		2.9 t	2.6 t
13.12 ft		2.9 t	2.3 t
14.76 ft		2.9 t	2.0 t
16.40 ft			1.8 t
18.04 ft			1.6 t
19.68 ft			1.5 t

*These values include boom deflections.

● Lifting Heights & Working Radius



Low Emission Engine

A new generation of eco-friendly engines with Urea-SCR system ensures a high level of environmental friendliness.



Ultra Low Noise Level

It stays below the allowable construction noise levels in many industrialised countries.



Standard Application of Biodegradable Oil

If biodegradable oil happens to be spilled into soil or water, it does not harm the surrounding ecosystem.



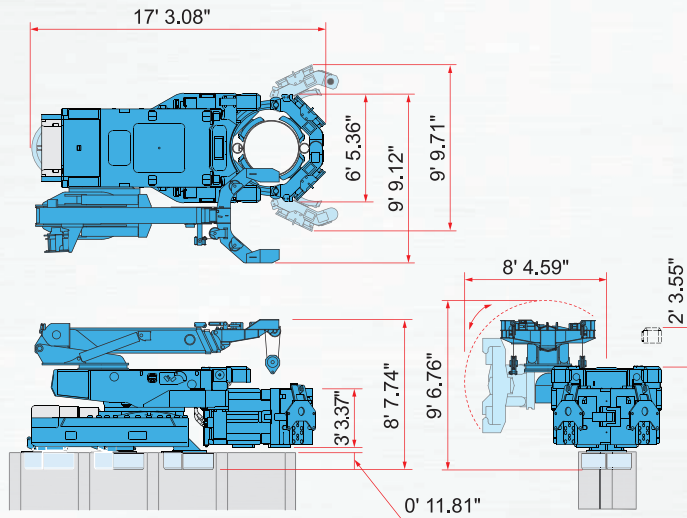
New GIKEN IT System

The server automatically stores data on the operations and maintenance of press-in machines. This information can be analysed and used to provide effective support in different ways.

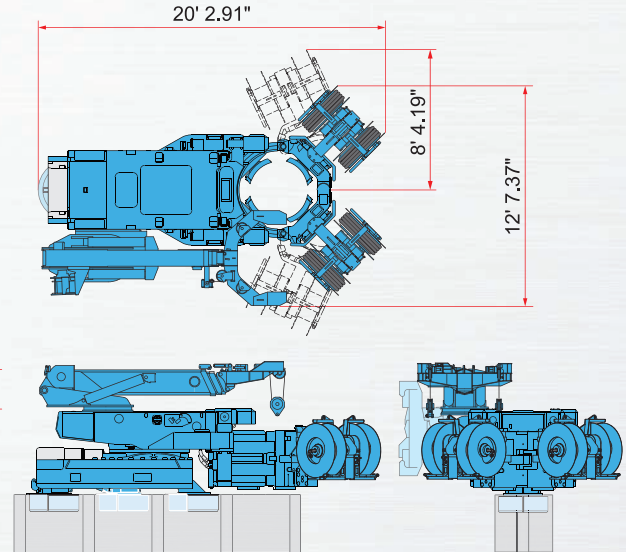


Dimensions & Specifications

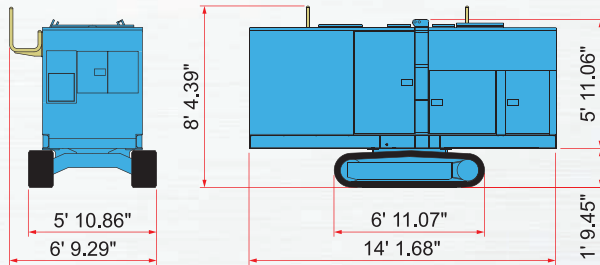
Standard Mode



Water Jetting Mode



Power Unit



Power Unit		EU300K4
Power Source		Diesel Engine
Rated Output	Power Mode	355 HP /1800 rpm
	Eco Mode	316 HP /1600 rpm
	Super Eco Mode	276 HP /1400 rpm
Fuel Tank Capacity		158 US gal
Hydraulic Reservoir		166 US gal (PILER ECO OIL)
AdBlue™/DEF Tank Capacity		10 US gal
Moving Speed		0.86 mph
Total Mass		16644 lb (with standard 98.42 ft horses)

Press-in Machine Main Body CLP200A

Applicable Piles	Tubular Sheet Pile D31.49 - 39.37 in (PP, PT, LT)	
Max. Press-in Force	224.8 tonf	
Max. Extraction Force	247.2 tonf	
Stroke	27.55 in	
Press-in Speed	7.21 - 66.27 ft / min	
Extraction Speed	5.24 - 46.91 ft / min	
Control System	Radio Control	
Crane Lifting Capacity	2.95 t x 14.76 ft	
Crane Boom Length	13.05 ft - 23.22 ft (three telescoping)	
Crane Control System	Radio Control	
Mass	for D31.49 in	50265 lb
	for D35.43 in	51147 lb
	for D39.37 in	51477 lb
Crane Mass	6172 lb	

PILER JET REEL™ JR34

Applicable Piles	114.82 ft as standard	
Mass	1300 lb	
Total Mass	2987 lb (2 JET REEL™ and bracket)	

*The above specifications are subject to alternation without prior notice.



Construction Solutions Company

www.giken.com

CONTACT US



"SILENT PILER" is a registered trademark or trademark of GIKEN LTD. in the United States and other countries.

© 2024 GIKEN LTD. All Rights Reserved.

Ver 1.0ENus01 / 03 Apr 2024