

Construction Revolution

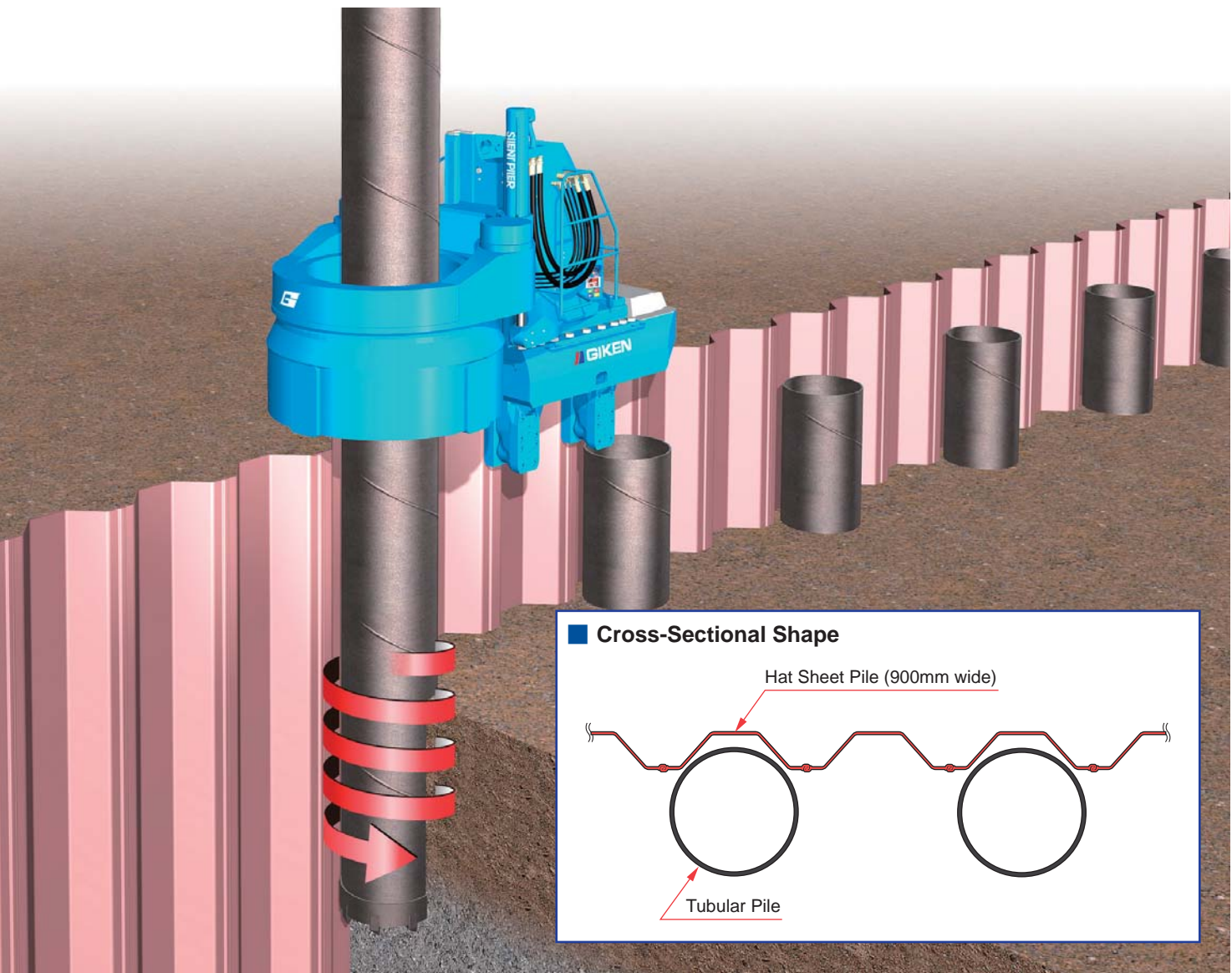
An efficient wall structure combining Tubular Piles (Strength & Stiffness) and Hat Sheet Piles (Watertightness)

Combi-Gyro Method



Combi-Gyro Method

- Building Highly Stiff Wall Structure with Excellent Watertightness
- Hat Sheet Piles and Tubular Piles can be installed by the same Press-in Machine



Press-in Work Operation

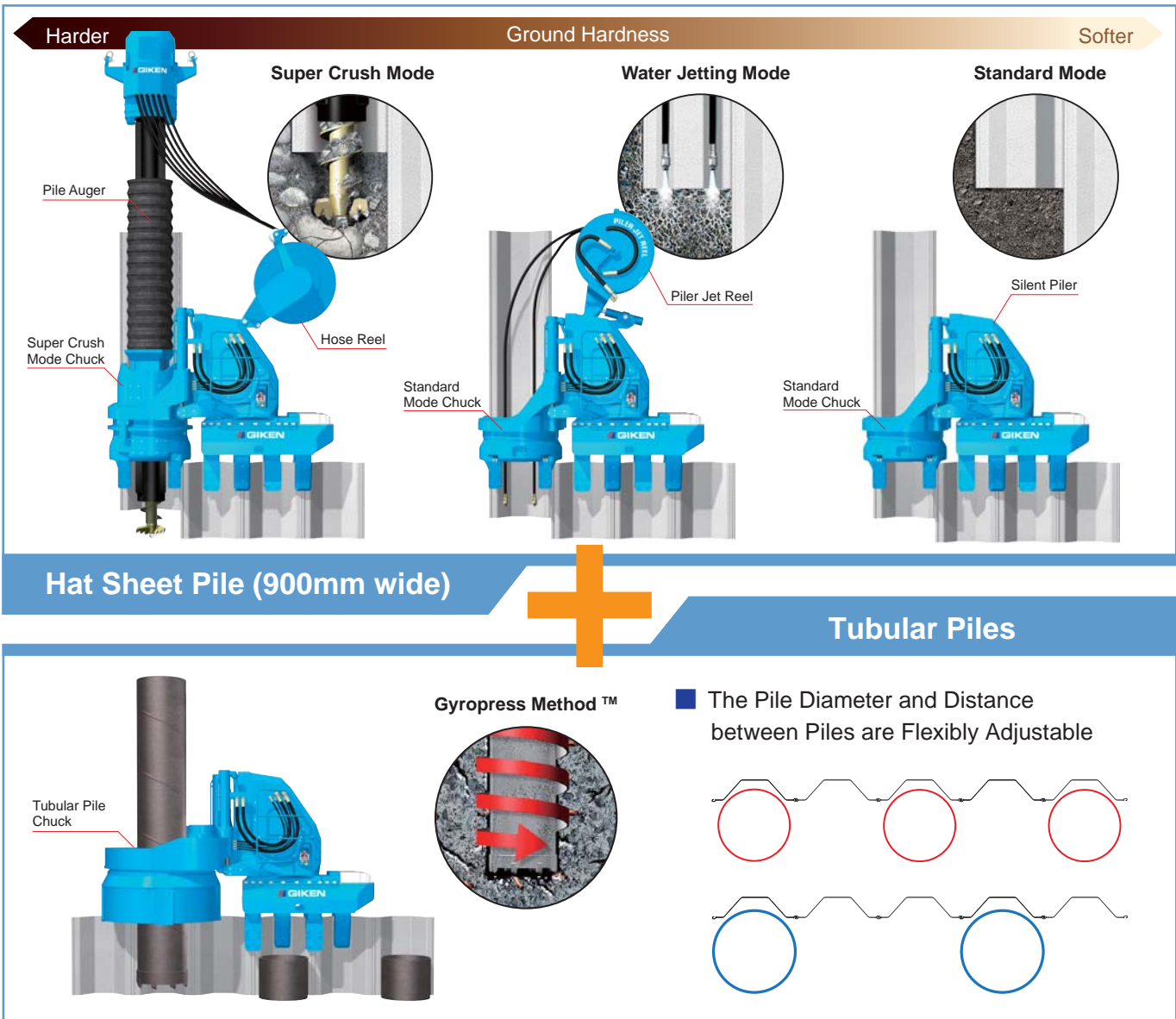


Installation in Progress



Post Excavation

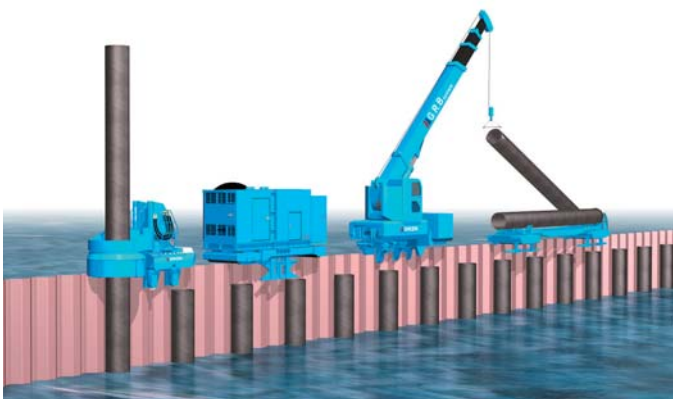
Hat Sheet Piles and Tubular Piles can be installed by the same Press-in Machine



Work is Possible under Severe Construction Conditions

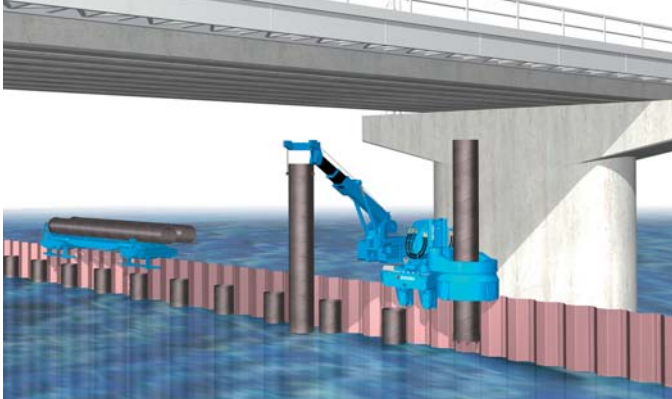
- All piling procedures can be carried out on the pressed-in piles with GRB System and enables fast construction at various places with emilinating temporary works.

Non-Staging System



Systemized method for over water, in narrow space, or on sloping or uneven ground

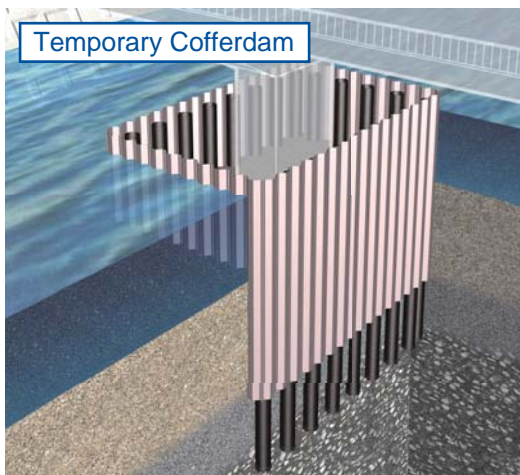
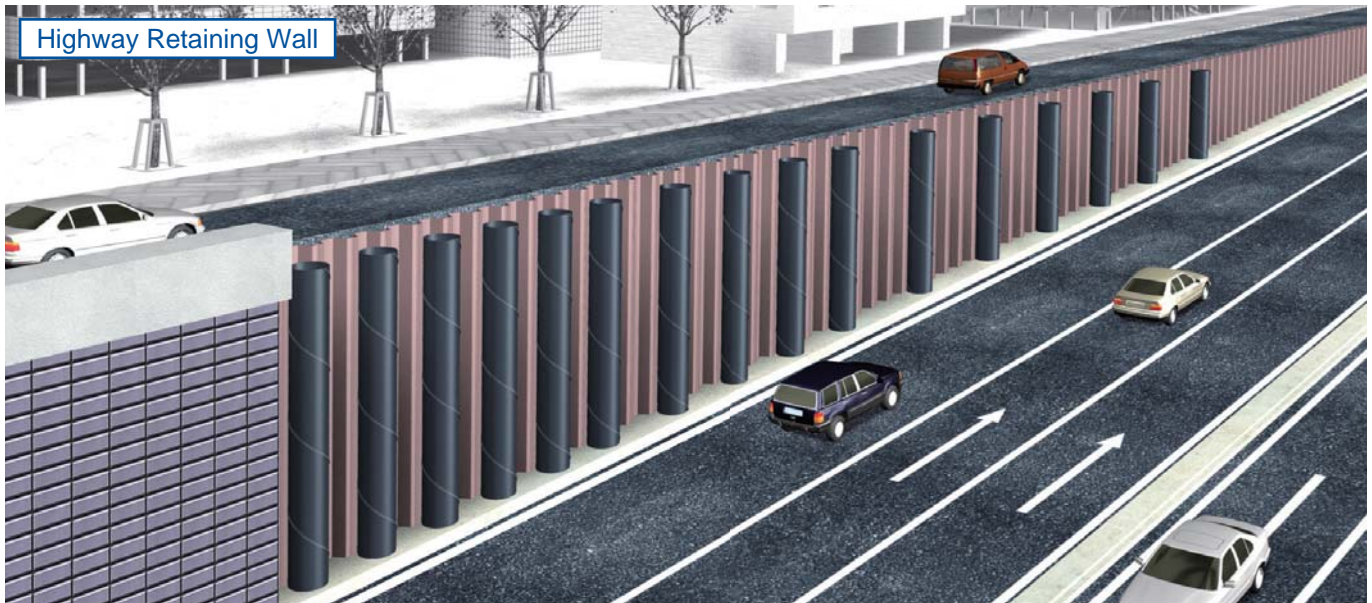
Overhead Clearance System



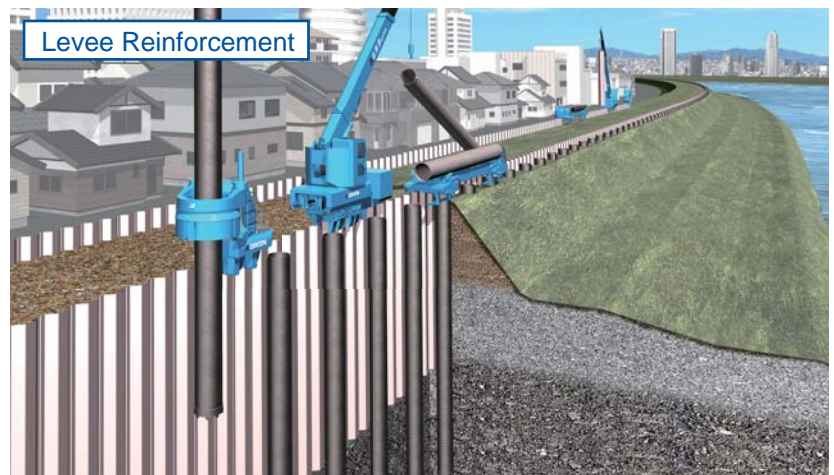
Systemized method overcoming overhead restriction

Practical Example

- Building a rational and very economic wall structure by adjusting pile length of Hat sheet piles and pile diameter, pile length, and distance between piles of Tubular piles in accordance with height of wall structure and ground conditions.



Excellent Waterproofing and
The Wall Structure is Easily Dismantled



Very Suitable for Fast Construction for Anti-Seismic Reinforcement and
Liquefaction Measures

GIKEN Construction Solutions Company

www.giken.com

GIKEN LTD.

Global Network : Japan, USA, UK, Germany, Singapore, China, Australia

Construction Design & Planning Group

1-3-28 Ariake, Koto-ku, Tokyo 135-0063, Japan

Tel. : +81-(0)3-3528-2633 Fax : +81-(0)3-3527-6055

Email : project@giken.com

For more contact information, please visit:

<http://www.giken.com/en/contactus/groupcompanies>

The Combi-Gyro Wall System is a joint development between GIKEN LTD. and NIPPON STEEL & SUMITOMO METAL CORPORATION.