

# Kawasaki Station East Exit Bicycle Parking Area (Fifth Facility)

Location : Kawasaki City, Kanagawa

Completion : March 2020

Client : Kawasaki City

## ECO Cycle units installed at the East Exit of Kawasaki Station



Two ECO Cycle units were installed as part of a basic plan for comprehensive bicycle measures in the area around the east exit of Kawasaki Station. Full consideration had to be given to the surrounding environment, with the location's high foot traffic and being adjacent to condominiums and shops. The Press-in Method was rated highly for minimising space and time for construction.

### Location Map

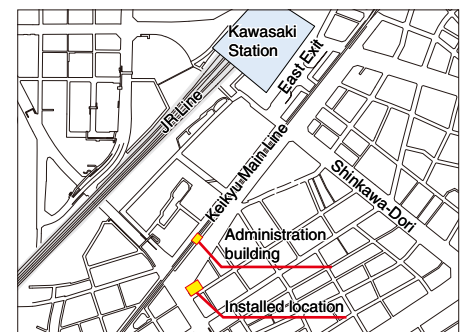


Image created by GIKEN based on fundamental geospatial data from Geospatial Information Authority of Japan (<https://lfd.gsi.go.jp/download/menu.php>)

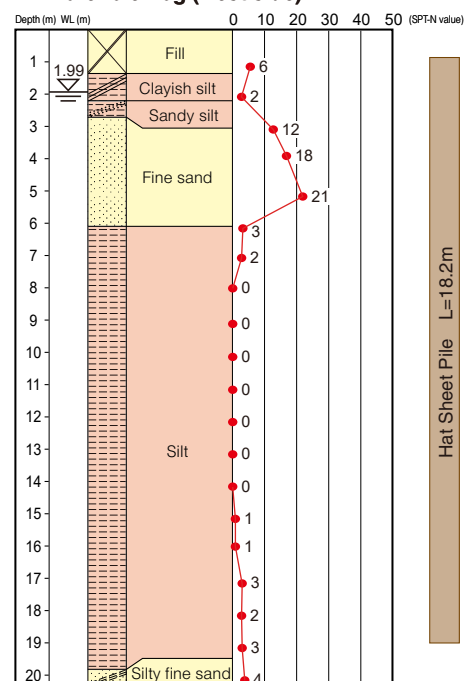
### Entry/exit booth designed to harmonize with the rows of cherry trees that are a symbol of the area



### ECO Cycle Specifications

- Units : 2
- Total Capacity : 408 bicycles (204 × 2 units)
- Usage : Monthly or Hourly use
- Card Type : IC card

### Borehole Log (west side)



\* Extrapolated SPT-N value when over 50.

### Layout

