

The Kyoto City Hall's Front Square Bicycle Parking

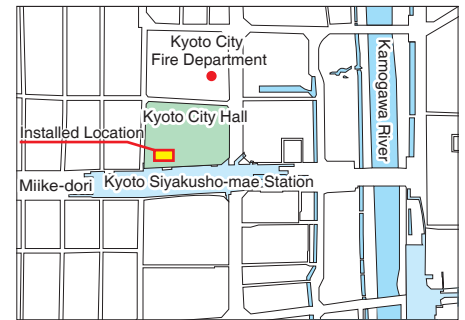
Location : Kyoto City, Kyoto
 Completion : December 2015
 Owner : Kyoto City

Installation in the municipal office premises



2 ECO Cycle units were installed on the premises of City Hall for local commuters and shoppers as a part of City Hall renovations. The ECO Cycles were constructed within a minimum working space to avoid disturbing the busy city hall square which hosts frequent public events. The ECO Cycle entrance booths were designed to be sympathetic with the historical Kyoto City Hall building.

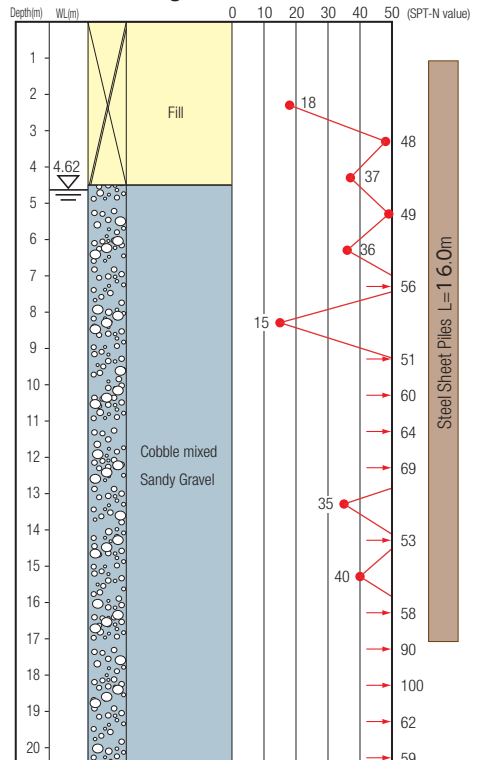
Location Map



ECO Cycle Specifications

- Units : 2
- Total Capacity : 408 bicycles (204 x 2 units)
- Usage : Monthly or Hourly use
- Card Type : IC Card

Borehole Log



※SPT-N values over 50 are extrapolated numbers.



Layout

