

Mikawajima Station Front Square Bicycle Parking Area

Location : Arakawa-ku, Tokyo

Completion : September 2014

Client : Arakawa-ku

In a private redevelopment project, a public bicycle parking area was installed at the Mikawajima Station of the JR Joban line.



In a redevelopment project at the south area of the Mikawajima Station front square, a mechanical-type underground bicycle parking facility was installed as a public bicycle area of the Arakawa ward. Construction case where a bicycle parking area was installed close to the JR line in an alluvial low land formed by rivers such as Arakawa and Edogawa Rivers. Space-saving and short-period construction without affecting the surroundings was realized, coordinating with the constructions of redeveloped buildings. As a result, a highly convenient bicycle parking area was completed close to the station wickets.

Location Map

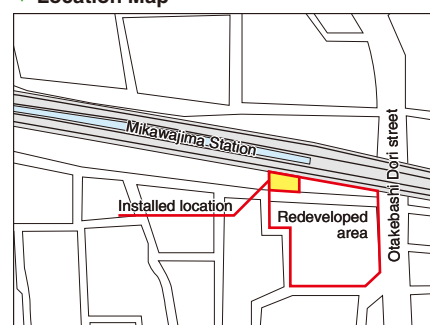
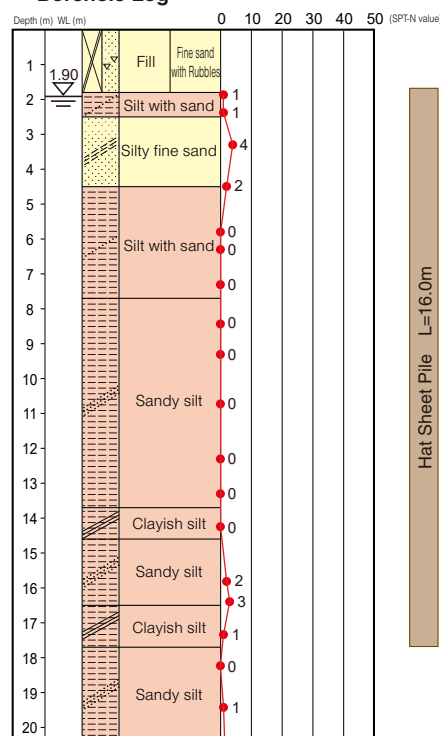


Image created by GIKEN based on fundamental geospatial data from Geospatial Information Authority of Japan (<https://gdg.is.go.jp/download/menu.php>)

ECO Cycle Specifications

- Units : 2
- Total Capacity : 408 bicycles (204 × 2 unit)
- Usage : Monthly or Hourly use
- Card Type : IC card

Borehole Log



Before construction



After construction



Redeveloped building



Layout

