

Mikawadai Park Mechanical Underground Bicycle Parking Development Project

Location : Minato-ku, Tokyo

Completion : March 2013

Client : Minato-ku

Installation of mechanical-type underground bicycle parking in the community of Roppongi which is an internationally diverse area



One ECO Cycle unit was Installed in "Mikawadai Park", which is a city park in Roppongi, Minato-ku, Tokyo. High expectations are placed on this to be a mechanical underground bicycle parking space that suits the internationally recognised district of Roppongi. This is the second case for ECO Cycle being operated as a public bicycle parking space in Minato-ku, the first being the bicycle parking space in Konan Star Park in front of Shinagawa Station.

Location Map

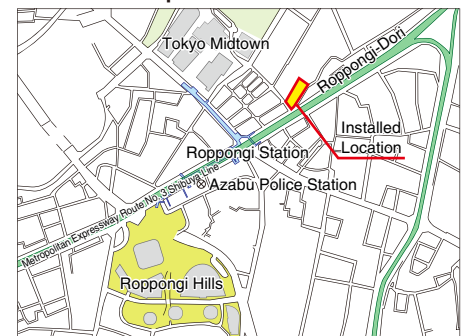
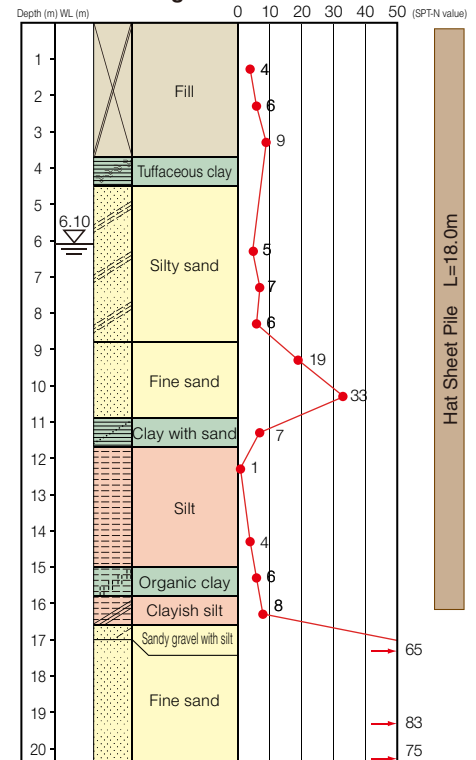


Image created by GIKEN based on fundamental geospatial data from Geospatial Information Authority of Japan (<https://lfd.gsi.go.jp/download/menu.php>)

ECO Cycle Specifications

- Units : 1
- Total Capacity : 204 bicycles (204 × 1 unit)
- Usage : Monthly or Hourly use
- Card Type : IC card

Borehole Log



* Extrapolated SPT-N value when over 50.



Layout

