

# Bicycle Parking in Complex Building at Ningyo-cho, Chuo-ku

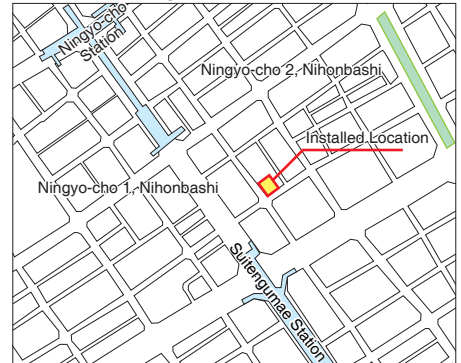
Location : Chuo-ku, Tokyo  
 Completion : October 2010  
 Owner : Chuo-ku

## Installed ECO Cycle in complex building for the first time as PFI business



The first business example in Japan where ECO Cycle was installed as a PFI business. Built within a public facility complex, serving as a public bicycle parking lot for people using Ningyo-cho and Suitengumae Stations nearby. An example of constructing the unit within the limited space of 16m x 18m under the ground consisting of soft Yurakucho strata.

### Location Map



Complete View of Bicycle Parking Building

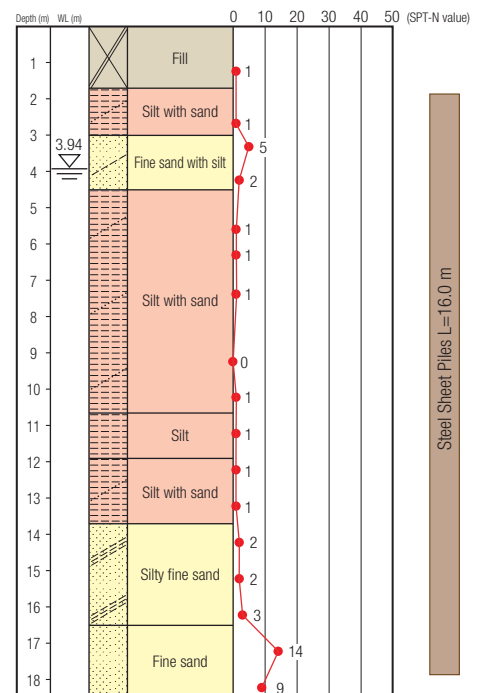


### ECO Cycle Specifications

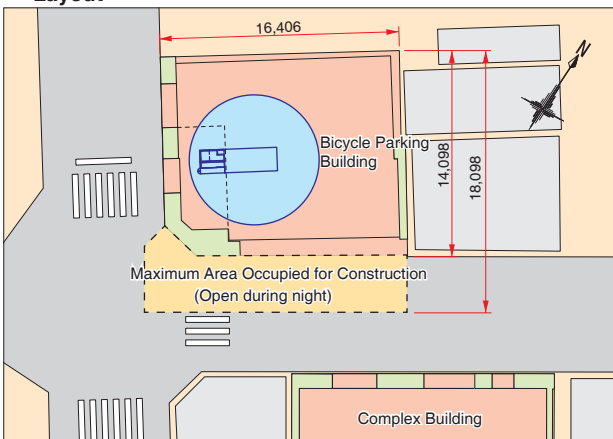
- Units : 1
- Total Capacity : 204 bicycles (204 x 1 unit)
- Usage : Monthly use
- Card Type : IC card



### Borehole Log



### Layout



Complete View of Complex Building