

Bicycle Parking No.1 in front of Hankyu Railway Minamisenri Station West

Location : Suita City, Osaka

Completion : June 2010

Client : Suita City

Installed as the first public underground mechanical parking lot in Kansai Region



As public bicycle parking lot in Kansai Region, an underground mechanical parking lot was installed for the first time. Along with the station-front redevelopment project of the Hankyu Railway Minamisenri Station, 2 ECO Cycle units were built at the traffic circle. By concentrating several aboveground bicycle parking lots to the underground of the train station plaza, the space in front of the station is utilised effectively and highly convenient parking has become available.

Location Map

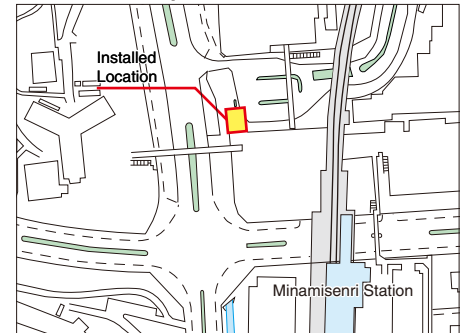
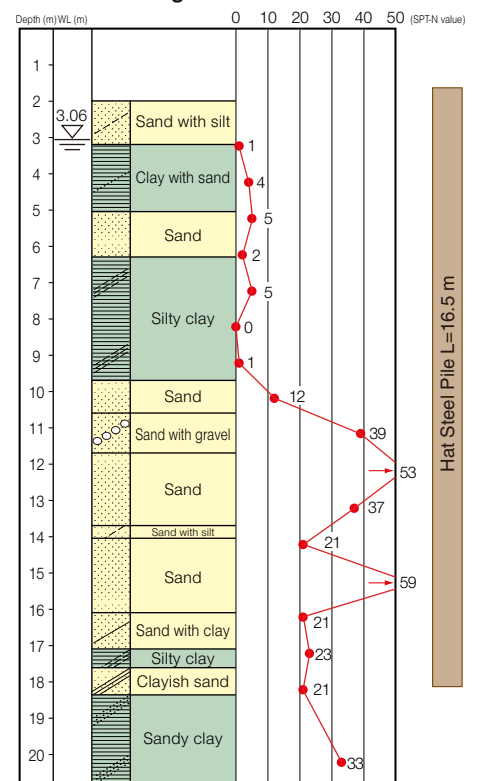


Image created by GIKEN based on fundamental geospatial data from Geospatial Information Authority of Japan (<https://lfd.gsi.go.jp/download/menu.php>)

ECO Cycle Specifications

- Units : 2
- Total Capacity : 408 bicycles (204 × 2 units)
- Usage : Monthly use
- Card Type : IC card

Borehole Log



* Extrapolated SPT-N value when over 50.



Layout

