

Mechanical Underground Bicycle Parking, East Exit of Japan Railways Chiba Station

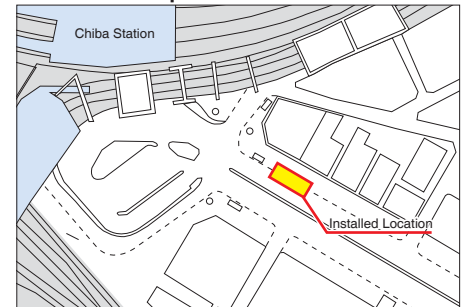
Location : Chiba City, Chiba
 Completion : May 2009
 Owner : Chiba City

Japan's first case using underground space of a pedestrian walkway in front of a train station



For the first time in Japan, mechanical underground bicycle parking lot was installed on the street. The underground frame structure was built under the vehicle roadway and the pedestrian walkway to allow vehicles to pass over the ECO Cycle structure. Administration of the bicycle parking is controlled centrally at a nearby bicycle parking administration building.

▼ Location Map

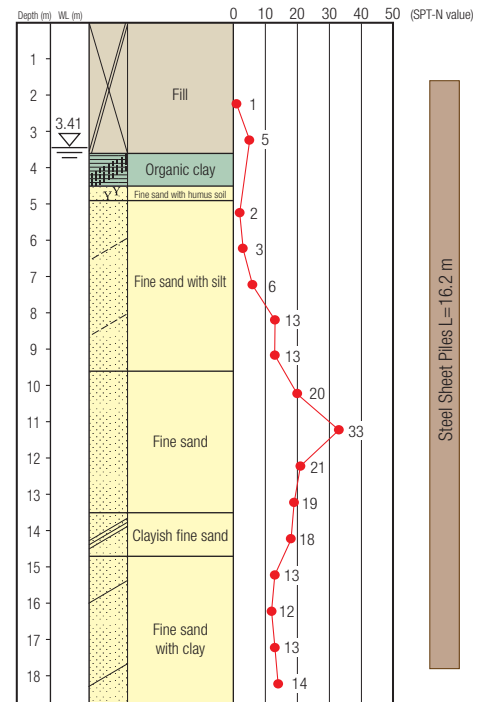


ECO Cycle Specifications

- Units : 2
- Total Capacity : 408 bicycles (204 × 2 units)
- Usage : Monthly use
- Card Type : IC card



▼ Borehole Log



▼ Layout

