

# Underground Bicycle Parking, South Exit of Jiyugaoka Station

Location : Meguro-ku, Tokyo

Completion : December 2006

Owner : Meguro-ku

**Completed in a short construction period of 5 months in a narrow space next to the railroad**



Central entrance



**Under construction**

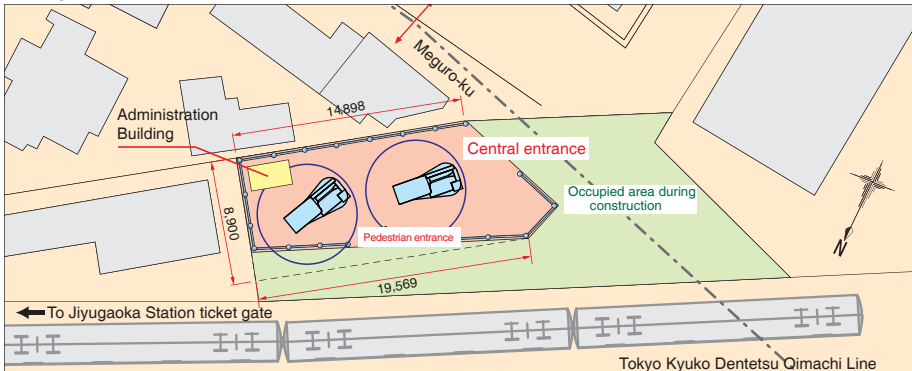


Pile press-in



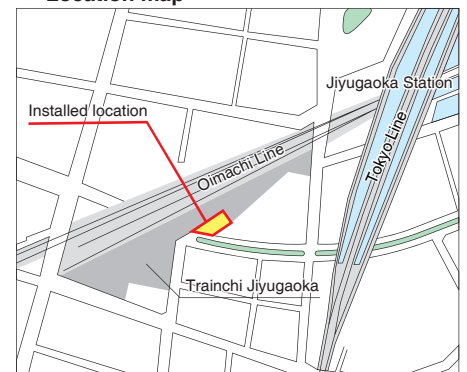
Internal architecture

**Layout**



Installation work was done under the conditions of a narrow space with a width of 11 m and in close proximity to the railroad in Jiyugaoka, where the Tokyu Toyoko Line and Tokyu Oimachi Line intersect. Despite numerous limitations, a press-in method using a systematic specialised machine made short-period and compact construction possible without affecting the adjacent railroad traffic and buildings.

**Location map**

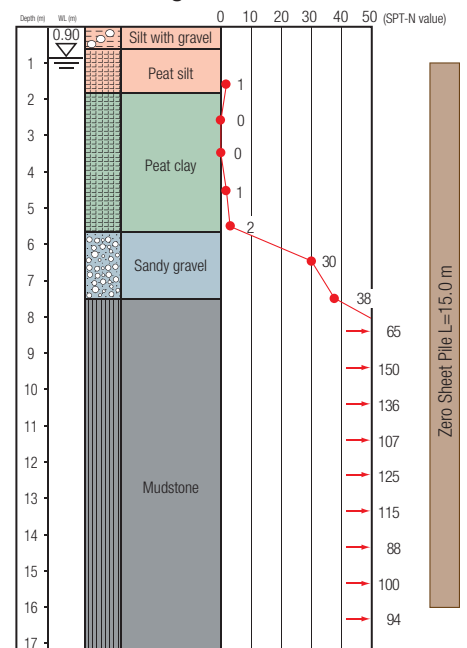


**ECO Cycle Specifications**

- Units : 2
- Total Capacity : 288 bicycles  
(144 bicycles x 2 units)
- Usage : Monthly use
- Card Type : PET magnetic card  
(re-writable\*)

\*The gate number is printed on the card each time of use

**Borehole Log**



\*\*SPT-N values over 50 are extrapolated numbers.