

Seijo North No. 2 Rental Cycle Port

Location : Setagaya-ku, Tokyo

Completion : November 2001

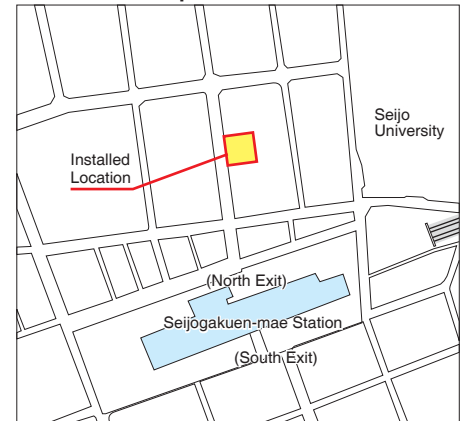
Owner : Setagaya-ku

Eco Cycle used as Rental Cycle Port



An Eco Cycle unit is used as a rental cycle port, in a municipal bicycle parking facility at Seijogakuen-mae station on the Odakyu line. This is the first Eco Cycle system introduced by local government, highly valued for its compact structure and smart appearance.

Location Map

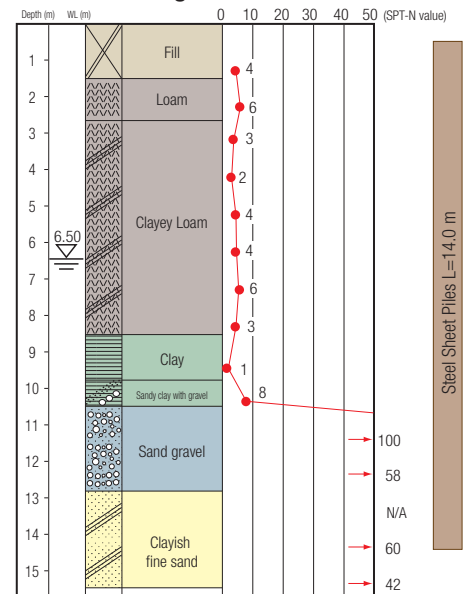


ECO Cycle Specifications

- Units : 1
- Total Capacity : 144 bicycles (144 × 1 unit)
- Usage : Monthly or Hourly Use (Rental Cycle)
- Card Type : Special plastic magnetic card

Good Design Award Winner 2003
(Japan Institute of Design Promotion)

Borehole Log



**SPT-N values over 50 are extrapolated numbers.

During construction



Underground architecture



Installation of the entrance booth