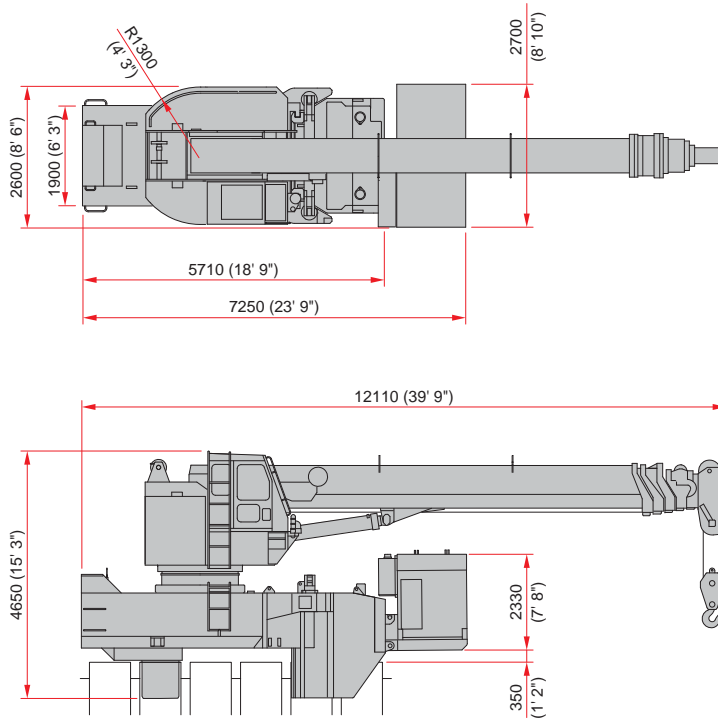


Tubular Clamp Crane CB4-1



CB4-1	Metric Unit	US Standard
Applicable Reaction Piles	D 800 - 1500 mm	D 32 - 60 in
Lifting Capacity	20,000 kg x 7.0 m	44,100 lb x 23.0 ft
Max. Working Radius	200 kg x 30.0 m	440 lb x 118.1 ft
Min. Rear Turning Radius	1,300 mm	4 ft 3 in
Crane Operation	Manual	
Movement on Piles	Self-moving	
Self-moving Operation	Remote Control	
Power Source	Diesel Engine	
Rated Output	96 kW	129 HP
Weight	47,600 kg	104,900 lb

Specifications are subject to alteration without prior notice.