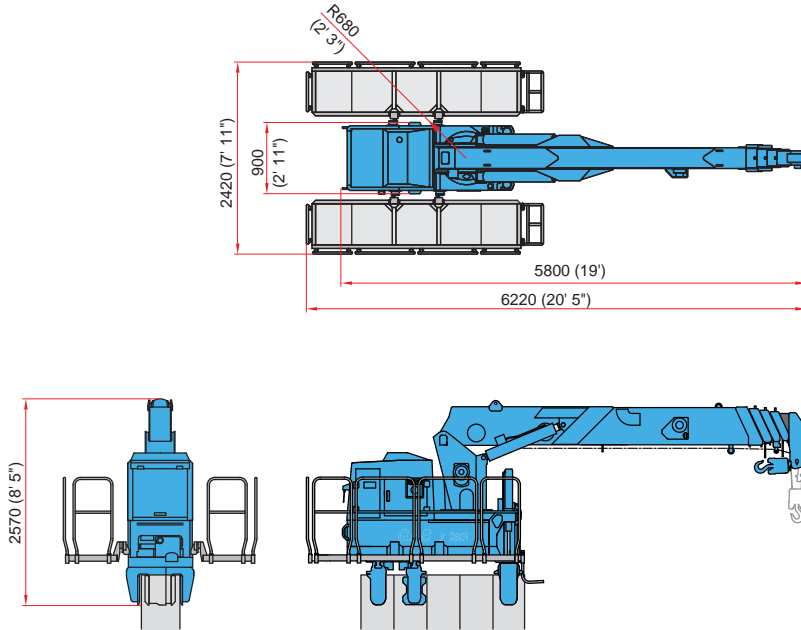


U Clamp Crane CB1B



CB1B	Metric Unit	US Standard
Applicable Reaction Piles	400 - 900 mm	15.75 - 35.43 in
Lifting Capacity	2,950 kg x 5.0 m	6,500 lb x 16.4 ft
Max. Working Radius	250 kg x 15.7 m	551 lb x 51.5 ft
Min. Rear Turning Radius	680 mm	2 ft 3 in
Crane Operation	Radio Control	
Movement on Piles	Self-moving	
Self-moving Operation	Radio Control	
Power Source	Diesel Engine	
Rated Output	6.6 kW	8.9 HP
Weight	5,200 kg	11,500 lb
Stand Weight	280 kg	617 lb
Stage Weight (1 side)	60 kg	132 lb

Specifications are subject to alteration without prior notice.